

Canvas 2 Cat. C
Fuse Cat. D
Harald 3 Cat. C
Hero Cat. B
Raas Cat. C
Remix 2 Cat. B
Re-wool Cat. B
Safire Cat. C
San Cat. C
Steelcut 2 Cat. C
Steelcut Trio 3 Cat. C
Twill Weave Cat. C
Vidar 3 Cat. C





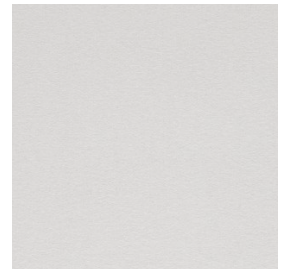
Hero Col. 191



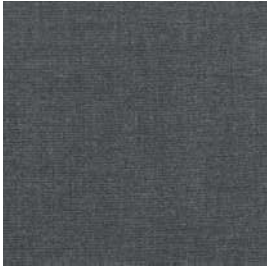
Steelcut 2 Col. 120



Twill Weave Col. 190



Hero Col. 101



Remix 2 Col. 173



Harald 3 Col. 133



Raas Col. 182



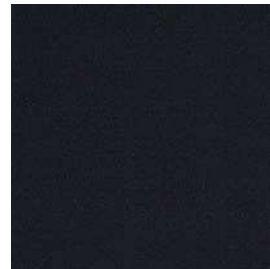
Twill Weave Col. 110



Remix 2 Col. 163



Safire Col. 008



Vidar 3 Col. 182



Hero Col. 211



Harald 3 Col. 283



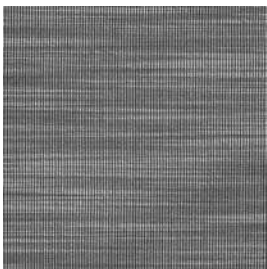
Hero Col. 181



Twill Weave Col. 790



San Col. 150



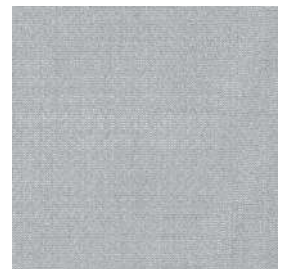
Raas Col. 142



Hero Col. 151



Vidar 3 Col. 1880



San Col. 130



Remix 2 Col. 143



Steelcut 2 Col. 180



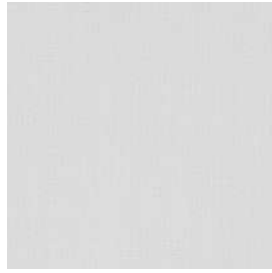
Harald 3 Col. 182



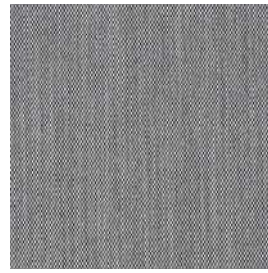
Hero Col. 991



Canvas 2 Col. 114



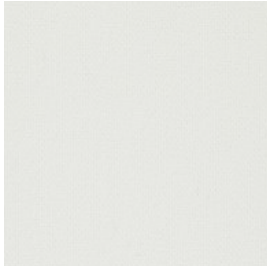
Twill Weave Col. 120



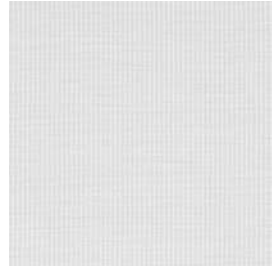
Steelcut Trio 3 Col. 124



Re-wool Col. 628



Steelcut 2 Col. 110



Fuse Col. 121



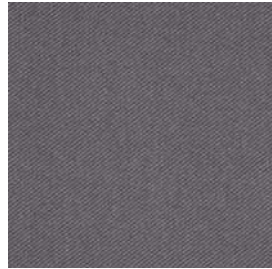
Harald 3 Col. 242



Twill Weave Col. 230



Raas Col. 112



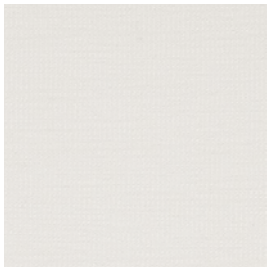
Twill Weave Col. 160



San Col. 230



Vidar 3 Col. 323



Fuse Col. 111



Re-wool Col. 108



Re-wool Col. 218



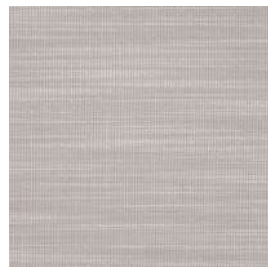
Raas Col. 462



Steelcut 2 Col. 220



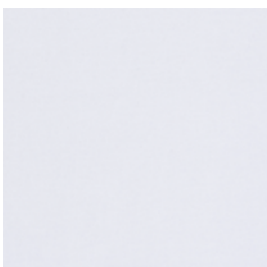
Re-wool Col. 128



Raas Col. 122



Vidar 3 Col. 333



Harald 3 Col. 123



Canvas 2 Col. 124



Vidar 3 Col. 222



Fuse Col. 351

Canvas 2 Designed by Giulio Ridolfo

Application Offices, hotels, institutions, domestic use. Great durability.
Description 90% new wool, worsted, 10% nylon. Width app. 55 inches (140 cm). Weight app. 480 g/lin.m. Material dyed. Colour differences may occur.
Abrasion: App. 100,000 rubs acc. to the Martindale method EN ISO 12947.
Lightfastness (ISO) 5-7. Pilling (EN ISO) 4. Fastness to rubbing (ISO) dry 4-5, wet 4. Sound absorption (EN ISO 354) 0.60/Class C (flat), 0.80/Class B (waved).
Airflow 849 Pa s/m. **Flame resistance:** AS/NZS 1530.3. BS 5852 Crib 5 with treatment. BS 5852 ignition source 3. BS 5852 Part 1. EN 1021-1/2. IMO FTP Code 2010:Part 8. NF D 60 013. NFPA 260. SN 198 898 5.3 with treatment. UNI 9175 11M. US Cal. Bull. 117-2013. ÖNORM B1 / Q1. (Copy of test report available).
Care Please see www.kvadrat.dk/care-and-maintenance.

Harald 3 Designed by Raf Simons and Fanny Aronsen

Application Upholstery for both domestic and contract use.
Description 100% cotton. Width app. 55 inches (140 cm). Weight app. 520 g/lin.m. Piece dyed. Colour differences may occur.
Abrasion: App. 100,000 rubs acc. to the Martindale method EN ISO 12947.
Lightfastness (ISO) 5-6. Pilling (EN ISO) 4-5. Fastness to rubbing (ISO) dry 4-5, wet 3-5. Sound absorption (EN ISO 354) 0.50/Class D (flat), 0.65/Class C (waved). **Airflow** 2809 Pa s/m. **Flame resistance:** AS/NZS 1530.3. AS/NZS 3837 Class 1. EN 1021-1. (Copy of test report available).
Care Please see www.kvadrat.dk/care-and-maintenance.

Raas Designed by Doshi Levien

Application Offices, hotels, institutions, domestic use. Great durability.
Description 92% new wool, worsted, 8% nylon. Width app. 56 inches (142 cm). Weight app. 770 g/lin.m. Yarn dyed. Colour differences may occur.
Abrasion: App. 100,000 rubs acc. to the Martindale method EN ISO 12947.
Lightfastness (ISO) 6-7. Pilling (EN ISO) 4-5. Fastness to rubbing (ISO) dry 4-5, wet 4-5. Flame resistance: BS 5852 Crib 5 with treatment. BS 5852 ignition source 3. BS 5852 part 1. EN 1021-1/2. IMO FTP Code 2010:Part 8. NF D 60 013. UNI 9175 11M. US Cal. Bull. 117-2013. (Copy of test report available).
Care Please see www.kvadrat.dk/care-and-maintenance.

Re-wool Designed by Margrethe Odgaard

Application Offices, hotels, institutions, domestic use. Great durability.
Description 45% recycled wool, 45% new wool, worsted, 10% nylon. Width app. 55 inches (140 cm). Weight app. 540 g/lin.m. Yarn dyed. Colour differences will occur.
Abrasion: App. 50,000 rubs acc. to the Martindale method EN ISO 12947.
Lightfastness (ISO) 5-7. Pilling (EN ISO) 4. Fastness to rubbing (ISO) dry 4-5, wet 4-5. Sound absorption (EN ISO 354) 0.50/Class D (flat), 0.75/Class C (waved). **Airflow** 258 Pa s/m. **Flame resistance:** AS/NZS 1530.3. BS 5852 Crib 5 with treatment. BS 5852 ignition source 3. BS 5852 part 1. EN 1021-1/2. IMO FTP Code 2010:Part 8. NF D 60 013. SN 198 898 5.3 with treatment. UNI 9175 11M. US Cal. Bull. 117-2013. ÖNORM B1 / Q1. (Copy of test report available).
Care Please see www.kvadrat.dk/care-and-maintenance.

San Designed by Louise Sigvardt

Application Offices, hotels, institutions, domestic use. Great durability.
Description 92% new wool, worsted, 8% nylon. Width app. 55 inches (140 cm). Weight app. 370 g/lin.m. Yarn dyed. Foreign fibres may occur in light colours. Colour differences may occur.
Abrasion: App. 60,000 rubs acc. to the Martindale method EN ISO 12947.
Lightfastness (ISO) 5-7. Pilling (EN ISO) 3-4. Fastness to rubbing (ISO) dry 4-5, wet 3-5. Flame resistance: BS 5852 Crib 5 with treatment. BS 5852 part 1. EN 1021-1/2. IMO FTP Code 2010:Part 8. NF D 60 013. UNI 9175 11M. US Cal. Bull. 117-2013. (Copy of test report available).
Care Please see www.kvadrat.dk/care-and-maintenance.

Steelcut Trio 3 Designed by Frans Dijkmeijer and Giulio Ridolfo

Application Offices, hotels, institutions, domestic use. Great durability.
Description 90% new wool, worsted, 10% nylon. Width app. 55 inches (140 cm). Weight app. 770 g/lin.m. Yarn dyed. Colour differences may occur.
Abrasion: App. 100,000 rubs acc. to the Martindale method EN ISO 12947.
Lightfastness (ISO) 5-7. Pilling (EN ISO) 4. Fastness to rubbing (ISO) dry 4-5, wet 3-5. Sound absorption (EN ISO 354) 0.70/Class C (flat), 0.95/Class A (waved). **Airflow** 910 Pa s/m. **Flame resistance:** AS/NZS 1530.3. AS/NZS 3837 Class 2. BS 5852 Crib 5 with treatment. BS 5852 ignition source 3. BS 5852 part 1. EN 1021-1/2. IMO FTP Code 2010:Part 8. NF D 60 013. NFPA 260. SN 198 898 5.3 with treatment. UNI 9175 11M. US Cal. Bull. 117-2013. ÖNORM B1 / Q1. (Copy of test report available).
Care Please see www.kvadrat.dk/care-and-maintenance.

Vidar 3 Designed by Raf Simons and Fanny Aronsen

Application Offices, hotels, institutions, domestic use. Great durability.
Description 94% new wool. 6% nylon. Width app. 55 inches (140 cm). Weight app. 765 g/lin.m. Yarn dyed. Foreign fibres may occur in light colours. Colour differences may occur.
Abrasion: App. 100,000 rubs acc. to the Martindale method EN ISO 12947.
Lightfastness (ISO) 5-7. Pilling (EN ISO) 4. Fastness to rubbing (ISO) dry 4-5, wet 3-5. Flame resistance: AS/NZS 3837 Class 2. BS 5852 Crib 5 with treatment. BS 5852 Part 1. DIN 4102 B2. EN 1021-1/2. GB 50222 B1 with treatment. IMO FTP Code 2010:Part 8. NF D 60 013. NFPA 260. UNI 9175 11M. US Cal. Bull. 117-2013. (Copy of test report available).
Care Please see www.kvadrat.dk/care-and-maintenance.

Fuse Designed by Raf Simons

Application Offices, hotels, institutions, domestic use. Great durability.
Description 65% new wool, worsted, 23% cotton, 8% viscose, 4% nylon. Width app. 56 inches (143 cm). Weight app. 810 g/lin.m. Length striped. Foreign fibres may occur in light colours. Yarn dyed. Colour differences may occur.
Abrasion: App. 100,000 rubs acc. to the Martindale method EN ISO 12947.
Lightfastness (ISO) 5-7. Pilling (EN ISO) 3-4. Fastness to rubbing (ISO) dry 4-5, wet 3-5. Flame resistance: BS 5852 Crib 5. BS 5852 Part 1. DIN 4102 B2. EN 1021-1/2. IMO FTP Code 2010:Part 8. NF D 60 013. UNI 9175 11M. US Cal. Bull. 117-2013. ÖNORM B1 / Q1. (Copy of test report available).
Care Please see www.kvadrat.dk/care-and-maintenance.

Hero Designed by Patricia Urquiola

Application Offices, hotels, institutions, domestic use.
Description 96% new wool, 4% nylon. Width app. 55 inches (140 cm). Weight app. 580 g/lin.m. Foreign fibres may occur in light colours. Piece dyed. Colour differences may occur.
Abrasion: App. 45,000 rubs acc. to the Martindale method EN ISO 12947.
Lightfastness (ISO) 5-7. Pilling (EN ISO) 3-4. Fastness to rubbing (ISO) dry 4-5, wet 4-5. Sound absorption (EN ISO 354) 0.55/Class D (flat), 0.75/Class C (waved). **Airflow** 410 Pa s/m. **Flame resistance:** AS/NZS 3837 Class 2. BS 5852 Crib 5 with treatment. BS 5852 part 1. DIN 4102 B2. EN 1021-1/2. IMO FTP Code 2010:Part 8. NF D 60 013. NFPA 260. SN 198 898 5.3 with treatment. UNI 9175 11M. US Cal. Bull. 117-2013. (Copy of test report available).
Care Please see www.kvadrat.dk/care-and-maintenance.

Remix 2 Designed by Giulio Ridolfo

Application Offices, hotels, institutions, domestic use. Great durability.
Description 90% new wool, worsted, 10% nylon. Width app. 54 inches (138 cm). Weight app. 415 g/lin.m. Material dyed. Colour differences may occur.
Abrasion: App. 100,000 rubs acc. to the Martindale method EN ISO 12947.
Lightfastness (ISO) 5-7. Pilling (EN ISO) 4. Fastness to rubbing (ISO) dry 4-5, wet 4. Sound absorption (EN ISO 354) 0.55/Class D (flat), 0.80/Class B (waved). **Airflow** 465 Pa s/m. **Flame resistance:** AS/NZS 1530.3. AS/NZS 3837 Class 2. BS 5852 Crib 5 with treatment. BS 5852 ignition source 3. BS 5852 part 1. EN 1021-1/2. IMO FTP Code 2010:Part 8. NF D 60 013. NFPA 260. SN 198 898 5.3 with treatment. UNI 9175 11M. US Cal. Bull. 117-2013. ÖNORM B1 / Q1. (Copy of test report available).
Care Please see www.kvadrat.dk/care-and-maintenance.

Safire Designed by Sahco

Application Offices, hotels, institutions, domestic use.
Description 43% viscose, 17% polyacrylic, 15% new wool, 9% cotton, 8% linen, 8% polyester. Width app. 55 inches (140 cm). Weight app. 1010 g/lin.m. Yarn dyed. Colour differences may occur.
Abrasion: App. 40,000 rubs acc. to the Martindale method EN ISO 12947.
Lightfastness (ISO) 5-6. Pilling (EN ISO) 3. Fastness to rubbing (ISO) dry 4, wet 3-4. Flame resistance: BS 5852 Crib 5 with treatment. BS 5852 ignition source 3. BS 5852 part 1. EN 1021-1/2. (Copy of test report available).
Care Please see www.kvadrat.dk/care-and-maintenance.

Steelcut 2 Designed by Frans Dijkmeijer and Giulio Ridolfo

Application Offices, hotels, institutions, domestic use. Great durability.
Description 90% new wool, worsted, 10% nylon. Width app. 55 inches (140 cm). Weight app. 825 g/lin.m. Piece dyed. Foreign fibres may occur in light colours. Colour differences may occur.
Abrasion: App. 80,000 rubs acc. to the Martindale method EN ISO 12947.
Lightfastness (ISO) 5-7. Pilling (EN ISO) 3-4. Fastness to rubbing (ISO) dry 4-5, wet 4. Sound absorption (EN ISO 354) 0.65/Class C (flat), 0.80/Class B (waved). **Airflow** 1014 Pa s/m. **Flame resistance:** AS/NZS 1530.3. AS/NZS 3837 Class 2. BS 5852 Crib 5 with treatment. BS 5852 part 1. EN 1021-1/2. IMO FTP Code 2010:Part 8. NF D 60 013. NFPA 260. SN 198 898 5.3 with treatment. UNI 9175 11M. US Cal. Bull. 117-2013. ÖNORM B1 / Q1. (Copy of test report available).
Care Please see www.kvadrat.dk/care-and-maintenance.

Twill Weave Designed by Jonathan Olivares

Application Offices, hotels, institutions, domestic use. Great durability.
Description 90% new wool, worsted, 10% nylon. Width app. 55 inches (140 cm). Weight app. 960 g/lin.m. Yarn dyed. Colour differences may occur.
Abrasion: App. 60,000 rubs acc. to the Martindale method EN ISO 12947.
Lightfastness (ISO) 5-7. Pilling (EN ISO) 3-4. Fastness to rubbing (ISO) dry 4-5, wet 4-5. Sound absorption (EN ISO 354) 0.70/Class C (flat), 1.00/Class A (waved). **Airflow** 1430 Pa s/m. **Flame resistance:** AS/NZS 1530.3. AS/NZS 3837 Class 3. BS 5852 Crib 5 with treatment. BS 5852 ignition source 3. BS 5852 Part 1. EN 1021-1/2. IMO FTP Code 2010:Part 8. NF D 60 013. SN 198 898 5.3 with treatment. UNI 9175 11M. US Cal. Bull. 117-2013. (Copy of test report available).
Care Please see www.kvadrat.dk/care-and-maintenance.