



---

L. P.  
Ignifughi / Fire retardant

---

D'ESTE COL 2 BIANCORE



HALKIN PLAIN COL 1 KASHA



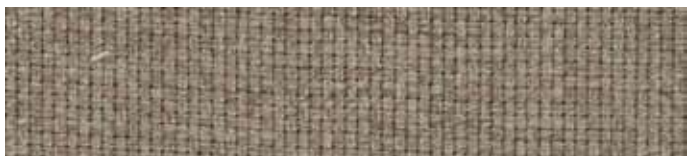
D'ESTE COL 3 JUTA



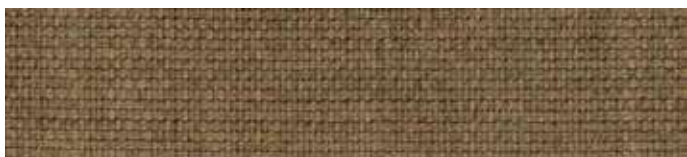
PENINSULA COL 2 ZEN



D'ESTE COL 5 KASHA



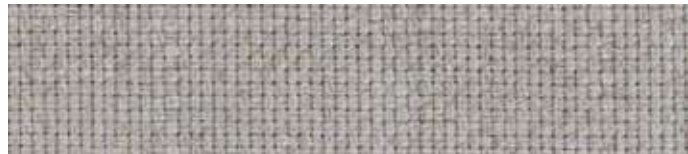
HALKIN PLAIN COL 2 SITATUNGA



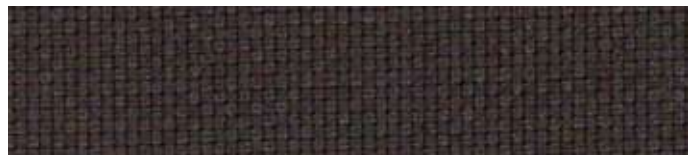
D'ESTE COL 24 GREY DUNE



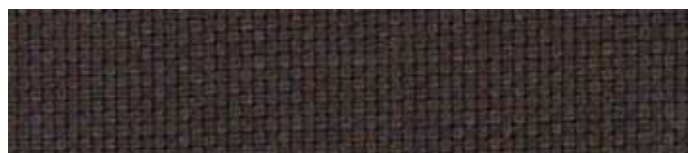
D'ESTE COL 17 ICE



HALKIN PLAIN COL 3 GRAPHITE



D'ESTE COL 22 GRAPHITE



PENINSULA COL 10 DARK GRAPHITE



D'ESTE COL 23 EBANO



PENINSULA COL 6 CURRY



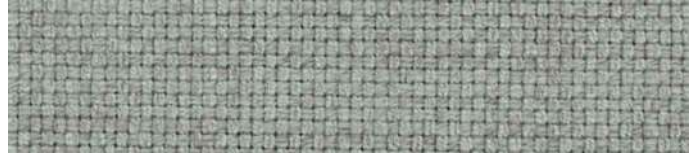
AMANKILA COL 9 POLVERE



D'ESTE COL 25 PIMENT DOUX



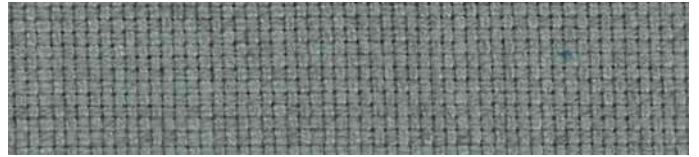
D'ESTE COL 18 MALACHITE



PENINSULA COL 5 PAPRIKA



D'ESTE COL 26 LOVAT



PENINSULA COL 4 CORALLO



D'ESTE COL 19 EUCALYPTUS



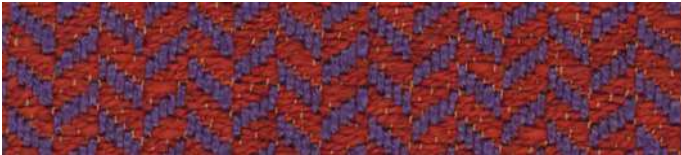
D'ESTE COL 12 COWES



D'ESTE COL 21 MIDNIGHT



AMANKILA COL 6 TANGERINE-MAUVE



PENINSULA COL 9 SERENATA



D'ESTE COL 15 AUBERGINE



D'ESTE COL 28 INDIGO



Categoria	Nome	Altezza	Peso	Composizione	Martindale	Caratteristiche tecniche e lavabilità					
C	AMANKILA	140 CM	880 GR/MTL	100% TREVIRA	40.000						
C	D'ESTE	145 CM	764 GR/MTL	100% PL TREVIRA	40.000						
C	HALKIN PLAIN	140 CM	540 GR/MTL	100% PL TREVIRA	30.000						
C	PENINSULA	140 CM	900 GR/MTL	100% PL TREVIRA	37.000						

Gebrüder Thonet Vienna GmbH (GTV)

Prinz Eugen Straße 42

1040 Wien, (Austria)

Offices of the trademarks' licensee

Production Furniture International S.p.A

Via Foggia, 23/H - 10152 Torino Italy

[www.gebruederthonetvienna.com](http://www.gebruederthonetvienna.com)